



Enterprise Control Center

Part No. MG-CC

Configure Multiple Locations from a Central Location

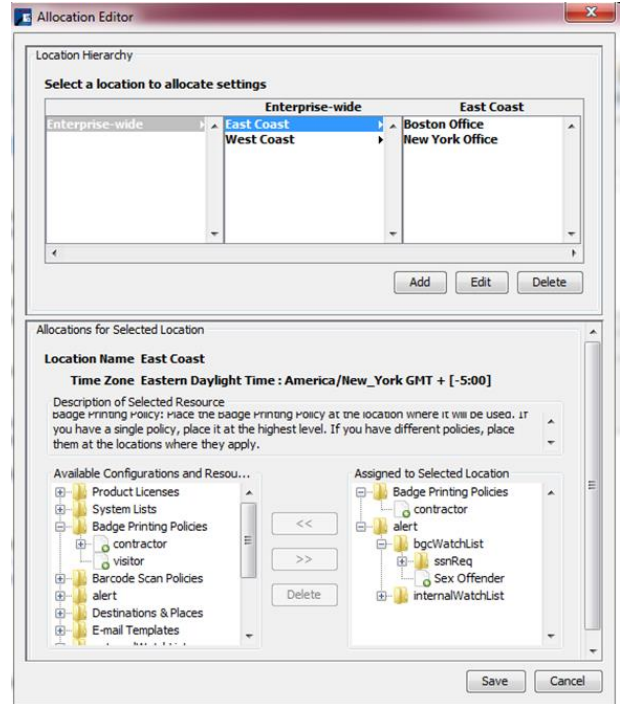
Set unique Procedures and Settings for Each Location

If your facility has multiple buildings or sites, Enterprise Control Center can help manage logistics with the ability to isolate and view only information that is pertinent to each specific location.

With this centralized tool, you can configure special policies and settings to be applied for each location; designate users to only login at certain stations; create custom screens specific to a site; and design badges and print policies for specific locations. A single logical site map lets you conveniently track destination and locations for easy operation.

Features & Benefits

- Create locations of the physical locations where you use PassagePoint on a single site map.
- Designate user's logins to only certain stations.
- Create site-specific custom screens.
- Design badges and print policies for specific locations.
- View lonely information that is pertinent to each specific location.



How it Works

You have an East location and a West location, you can do the following:

- 1) Assign some user accounts to the West location and others to the East location to limit access
- 2) Set time zones for each location from the central server
- 3) Allocate lists to each location: purpose of visit, arrival instructions, etc.
- 4) Assign separate screen policies to each location
- 5) Assign separate badges and badge printing policies to each location