

PassagePoint Global and PassagePoint EDU Technical Specifications

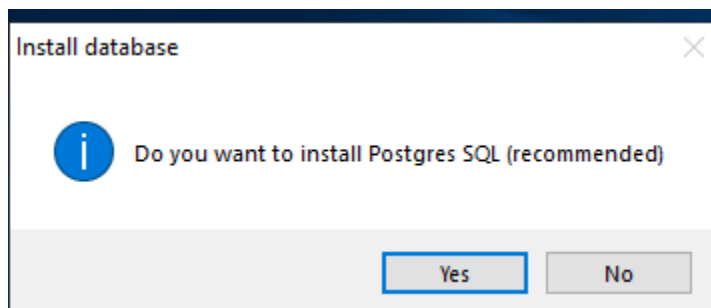
PassagePoint Components

Java and Apache Tomcat - Both are encapsulated and installed by the PassagePoint installer.

PostgreSQL - Included with the PassagePoint installer as an optional installation component

Microsoft SQL Server or Oracle - NOT included, but certified to be used with PassagePoint

NOTE during the installation process, if MS SQL Server or Oracle will be used instead of PostgreSQL, be sure to click on "No" when asked to install PostresSQL"



Operating System Requirements

Before installing PassagePoint, please make sure that the Windows Operating System meets the following requirements:

PassagePoint Server

PassagePoint Server should be a 64 bit system with any of the following Operating Systems:

- Windows Server 2022
- Windows Server 2019
- Windows Server 2016

PassagePoint Client

- Windows 11 (64 bit)
- Windows 10 (64 bit)

During install of Standalone or Server, Local admin rights are required for installing PostgreSQL.

Database Support

PostgreSQL is the default Database and is part of the PassagePoint installation package.

NOTE SQL or Oracle can be used instead of PostgreSQL

- PostgreSQL 9.2, 9.6, 16
- Microsoft SQL Server 2014, 2016, 2017 and 2022
- Oracle 11g and 12c

RAM Storage and Application Requirements

- Recommended Specs for PassagePoint Server
 - Processor Intel Core i7 or better
 - RAM 8 GB or more
 - Hard Disk 100 GB (other than the OS and other standard software)
- Recommended Specs for PassagePoint Client
 - Processor Intel Core i3 or better
 - RAM 6 GB or more
 - Hard Disk 50 GB (other than the OS and other standard software)
 - USB 2.0 or 3.0 Serial Ports to connect with devices like scanners, webcams, etc.

* Additional RAM and a powered hub may be required when using multiple USB devices, such as license scanner, printer, barcode scanner, camera, biometric scanner, etc. USB 2 ports offer best performance.

**Hard disk space is based on moderate data growth. Please contact your PassagePoint representative for larger deployment requirements.

Table 1— Client Workstation (including Kiosk) Requirements for Windows

	Minimum	Recommended
Processor	Intel iCore 3 or equivalent	Intel iCore5 or better
RAM	6 GB	8 GB or more*
Hard Disk Space	1 GB1GB	
Monitor	SVGA (1366x768)	XVGA (1366x768 or higher)
Serial Ports	USB 2.0 ports for devices	USB 2.0 ports for devices

Table 2 —Standalone/Server (up to 5 users) Requirements for Windows

	Minimum	Recommended
Processor	Xeon processor or iCore5 or better	Xeon processor or iCore5 or better
RAM	8 GB 1	12 GB or more*
Hard Disk Space	30 GB	50 GB**
Monitor	SVGA (800x600)	XVGA (1024x768) or higher
Serial Ports	USB 2.0 ports for devices	USB 2.0 ports for devices

Web Server

Apache Tomcat

NOTE IIS is required when web SSO or AD is needed. Please see below.

Microsoft IIS

- PassagePoint supports integration with Microsoft IIS (Internet Information Services) such that the PassagePoint Web module has Single Sign On support with IIS using Active Directory.

Port Requirements

Ports Required for Client to Server Communication(open from client to server):

- 2080 -> Default Web port, to run PassagePoint web on http
- 9876 -> PassagePoint server port
- 9875 -> This is a PassagePoint client node port which basically is used to

Other PassagePoint Ports:

- 9080 -> Default HL7 port (if configured)
- 2081 -> Rest API connector port (if configured)
- 8005 -> Default Tomcat shutdown port
- 8009 -> Default AJP port for Tomcat

Other Generic Ports (as needed per feature used):

- 80-> Default Web port
- 443 -> Default Web SSL port
- 25 -> Default SMTP mail port

- 389-> Default LDAP port

Remote Internet Access

PassagePoint does not require outside internet access unless customer plans to use one of the advanced Watchlist features. The following require remote internet access:

- Sex Offender Search
- Visual Compliance Restricted & Denied Parties List
- MK Data Denied Party Screening
- Importing Government Watch Lists

FOR QUESTIONS OR ADDITIONAL INFORMATION, CONTACT:

support@stopware.com

Phone: 408.367.0220 | www.stopware.com